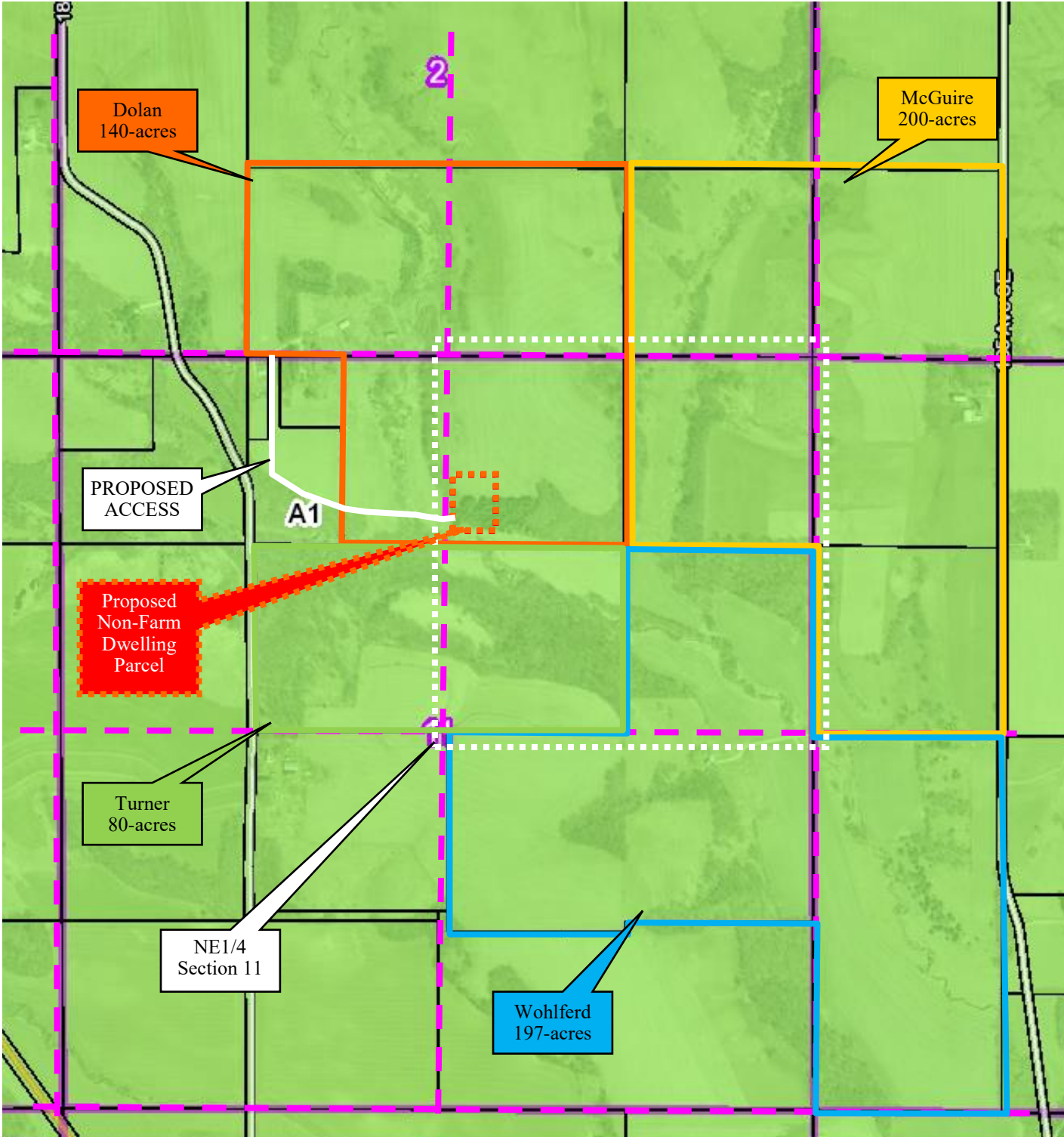


# ZONING MAP



**LEGAL DESCRIPTION:**

Parcel #: 51.02.34.032308  
 SECT-02 TWP-105 RANGE-011 80.00 AC SW 1/4 SE 1/4 AND SE 1/4 SW 1/4 SEC 2 105 11

Parcel #: 51.11.12.079907  
 SECT-11 TWP-105 RANGE-011 60.00 AC NW1/4 NE1/4 & NE1/4 NW1/4 LESS W670FT  
 N495.80FT NE1/4 NW1/4 ALSO LESS W660.94FT S816.59FT NE1/4 NW1/4 SEC 11 105-11

TCPA  
 4111 11th Avenue SW  
 Rochester, MN 55902  
[www.tcpamn.org](http://www.tcpamn.org)  
 507-529-0774