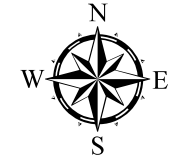


# Scanlan Farms

Barn Location

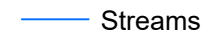
T107N, R12W S19, NW/4 of the SW/4  
Olmsted County, MN



## Legend



Well



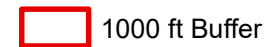
Streams



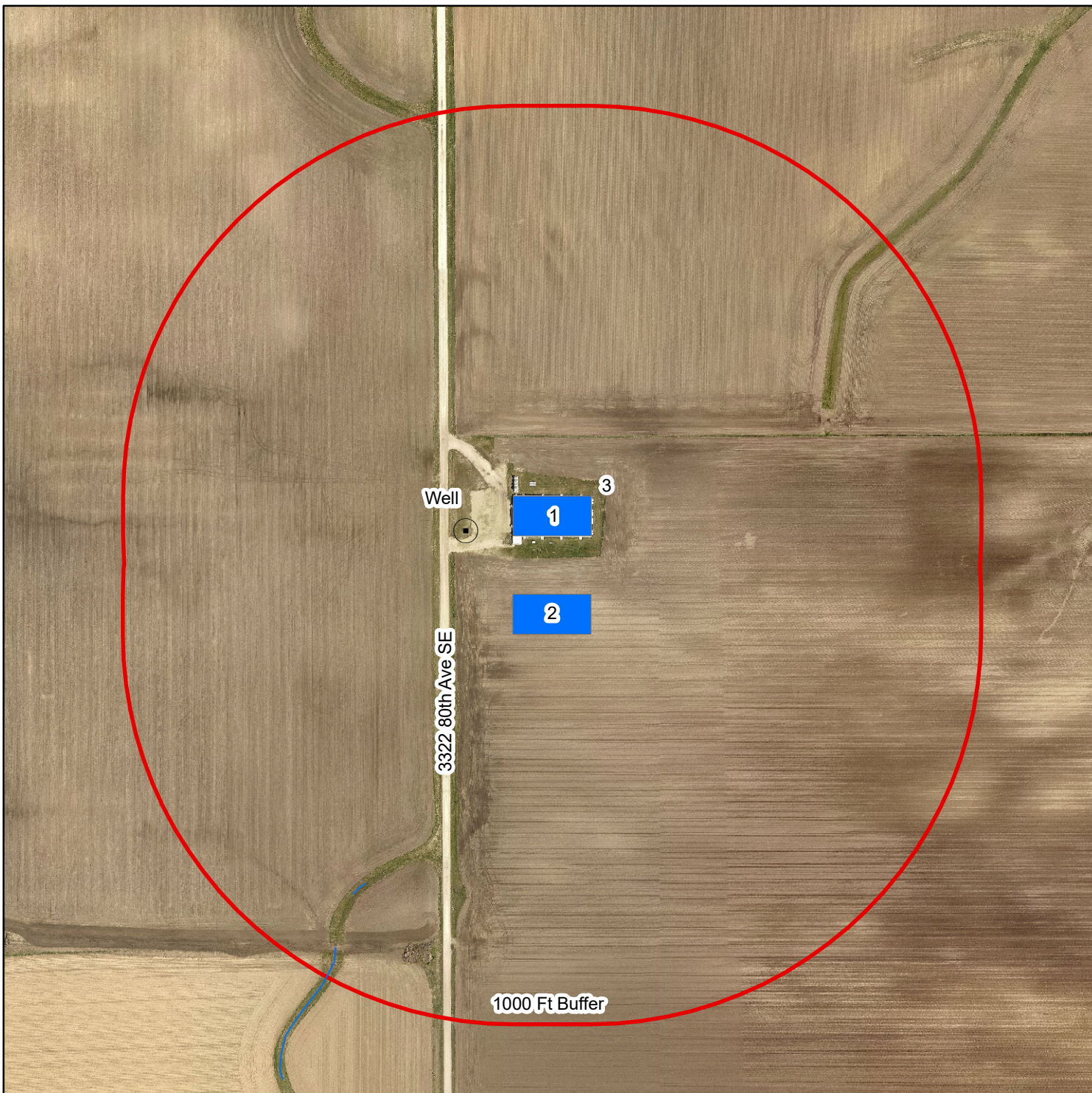
Proposed Barn



Compost Facility



1000 ft Buffer



Prepared by: Martin Larsen  
Olmsted County Feedlot Technician  
5/3/2021

Olmsted County is not responsible for omissions or errors contained herein. If discrepancies are found within this map, please notify the Olmsted County Feedlot Technician, 2122 Campus Drive SE Suite 200 Rochester, MN 55904 (507) 328-7137

