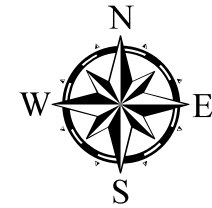


Odor OFFSET Current

Viola Township Sec 19
Olmsted County, MN



Legend

★ Address Points

■ Barn

Current

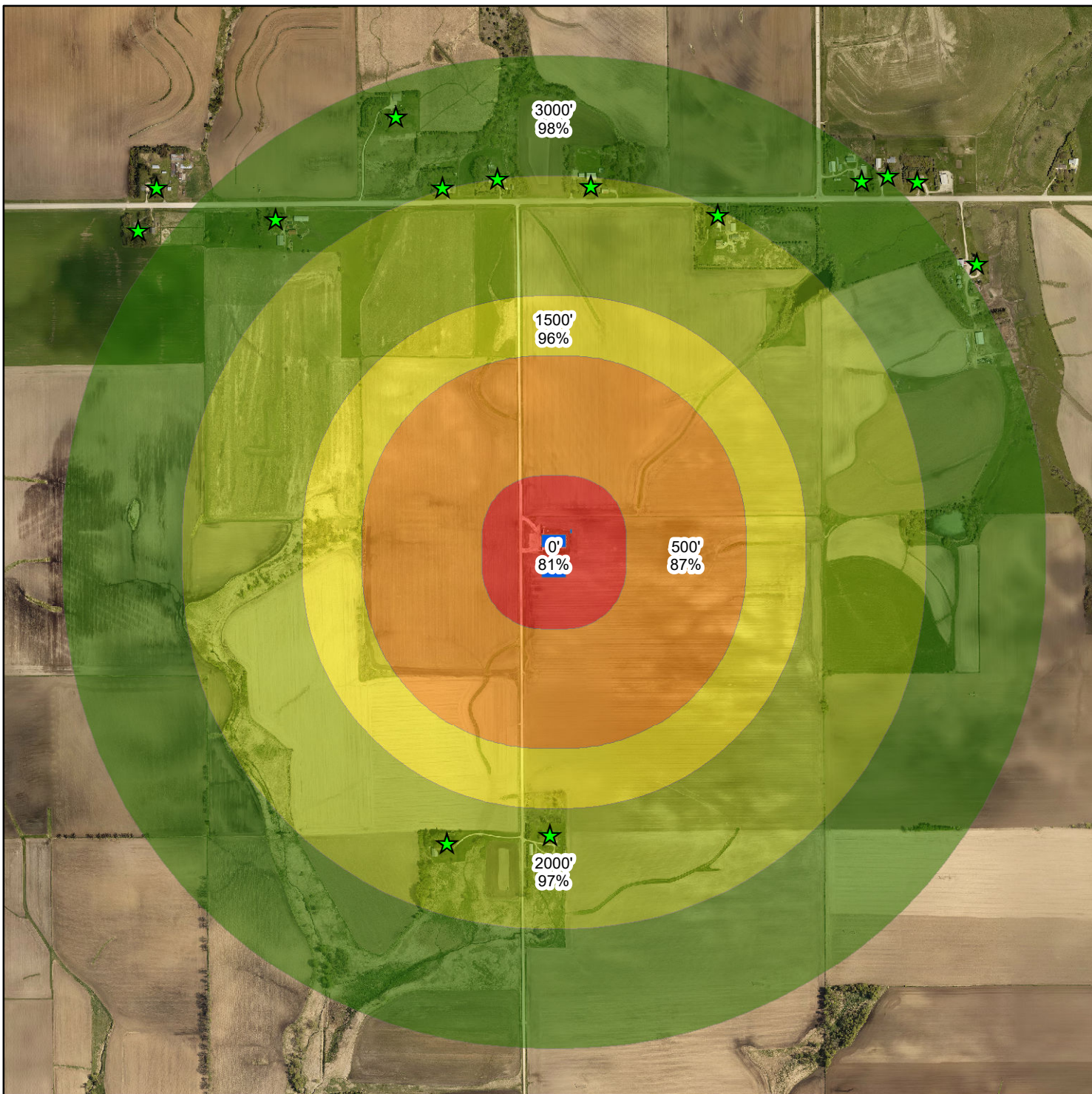
■ 81%

■ 87%

■ 96%

■ 97%

■ 98%



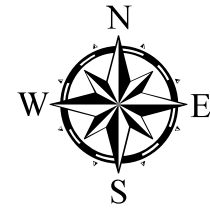
0 650 1,300 2,600 3,900 5,200
Feet

Prepared by: Martin Larsen
Olmsted County Feedlot Technician
6/28/2021

Olmsted County is not responsible for omissions or errors contained herein. If discrepancies are found within this map, please notify the Olmsted County Feedlot Technician, 2122 Camps Drive SE Suite 200 Rochester, MN 55904

Odor OFFSET Proposed

Viola Township Sec 19
Olmsted County, MN



Legend

★ Address Points

■ Barn

Future

■ 81%

■ 85%

■ 93%

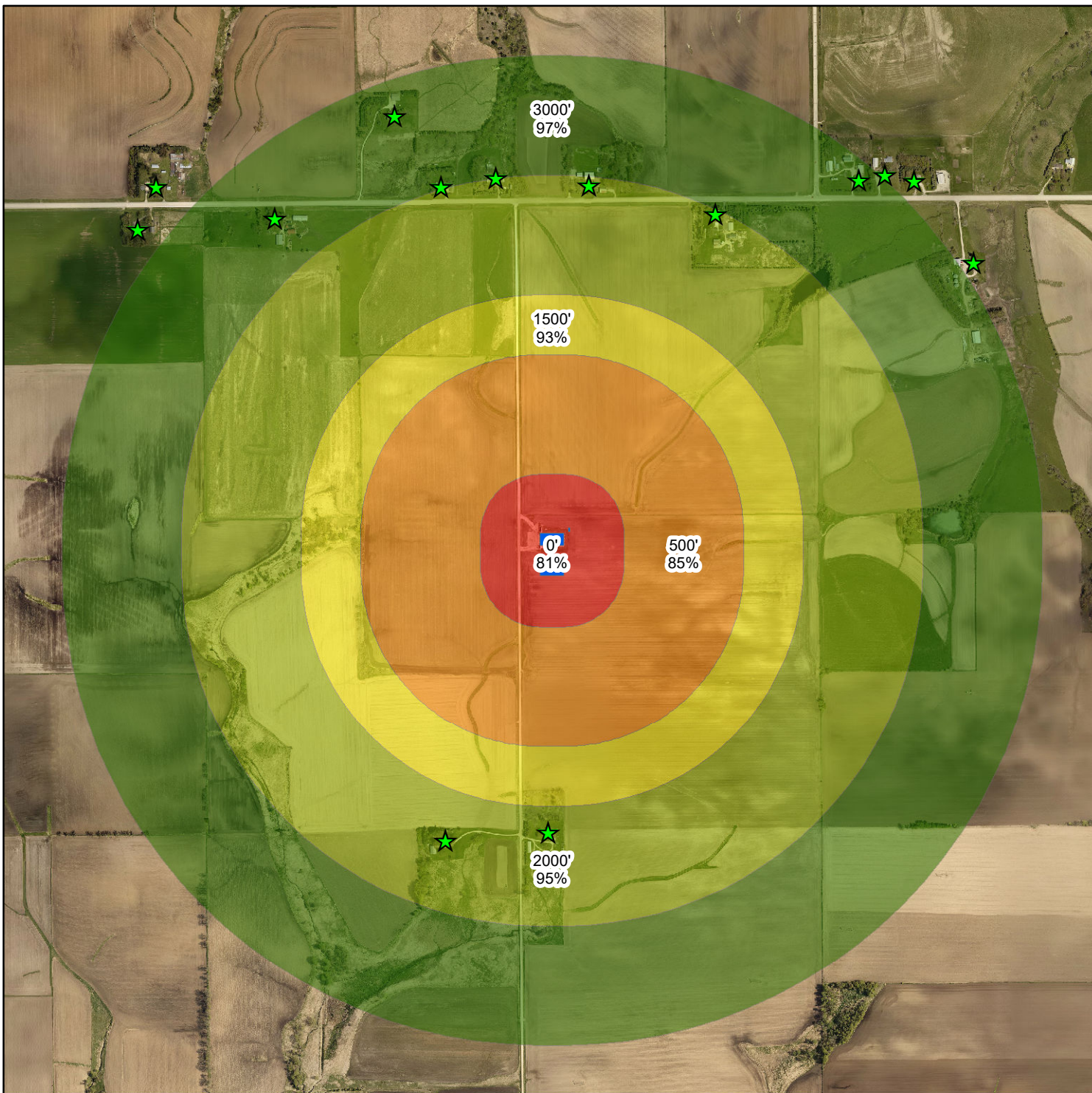
■ 95%

■ 97%

Prepared by: Martin Larsen
Olmsted County Feedlot Technician
6/28/2021

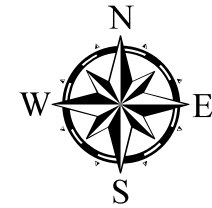
Olmsted County is not responsible for omissions or errors contained herein. If discrepancies are found within this map, please notify the Olmsted County Feedlot Technician, 2122 Camps Drive SE Suite 200 Rochester, MN 55904

0 650 1,300 2,600 3,900 5,200
Feet



Odor OFFSET With Biofilters

Viola Township Sec 19
Olmsted County, MN



Legend

★ Address Points

■ Barn

WBIOFLTRS

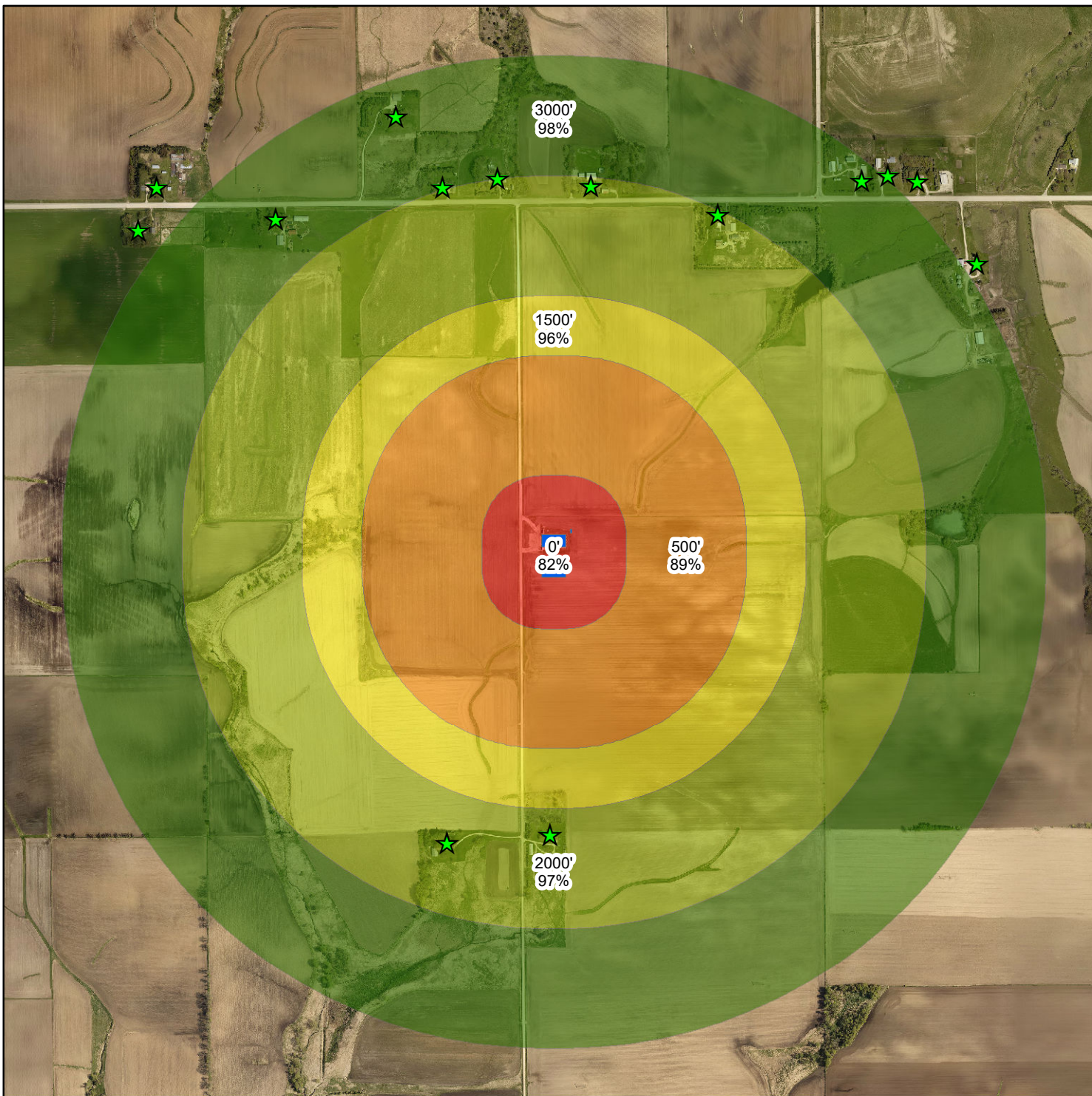
■ 82%

■ 89%

■ 96%

■ 97%

■ 98%



0 650 1,300 2,600 3,900 5,200
Feet

Prepared by: Martin Larsen
Olmsted County Feedlot Technician
6/28/2021

Olmsted County is not responsible for omissions or errors contained herein. If discrepancies are found within this map, please notify the Olmsted County Feedlot Technician, 2122 Camps Drive SE Suite 200 Rochester, MN 55904